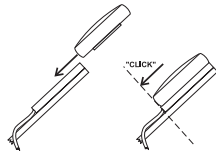


INSTALLATION

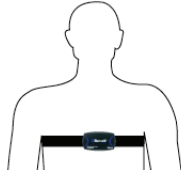
SpeedCoach Harness Dock Mounting

If your paddleboard is equipped with a SpeedCoach harness, you can mount your unit on the dock. Your SpeedCoach SUP will always use its internal accelerometer to calculate stroke rate. If an impeller is present, you have the option to select "Impeller" for speed and distance input. Otherwise, the harness dock will serve as a secure holder and your unit will use its internal GPS receiver to calculate speed and distance. Also, use the leash plug included to secure your unit's lanyard to your paddleboard to prevent loss of the unit.



Speed Coach Heart Rate Monitor (HRM)

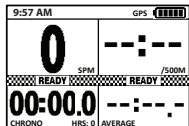
The heart rate monitor belt connects to your unit via Bluetooth technology. Adjust the straps to fit your body snugly. Attach belt across the lower portion of your chest, as shown in the figure to the right. To pair your strap to your unit, please see Setup Menu option.



BASIC OPERATION

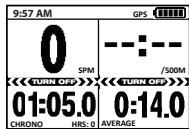
Turn On - Hold for 2 seconds.

Start - Press once. A checkered READY bar will appear on the screen. The READY bar will disappear and the stroke rate, speed/split, timer and flex windows will all start to run when the unit detects a stroke.



Stop - Press once.

Reset Timers - Hold for 2 seconds until the RESET bar appears, then release. Press again to Start.



Turn Off - Hold for 3 seconds until TURN OFF bar appears (after STOP and RESET), then release. Your SpeedCoach SUP will turn off automatically after 8 minutes of not sensing accelerometer movement. To preserve your battery, be sure to turn your unit off before carrying it in your workout bag.

Change Flex Field Measurement - Press up to change the bottom left flex window and press down to change the lower right flex window.



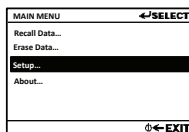
- DISTANCE** - Accrued distance since reset in your selected units of measure.
- AVERAGE** - Average Split or Speed since reset calculated as a function of the distance traveled over the elapsed time.
- COUNT** - Count of strokes detected since reset.
- DIST/STROKE** - Distance per stroke calculated on a stroke-by-stroke basis.
- HEART RATE** - Displays current heart rate in beats per minute (bpm).
- ELAPSED TIME** - Amount of time passed.

ADDITIONAL FUNCTIONS AND OPTIONS

NAVIGATING THE MENUS



Main Menu
Press once to access the Main Menu. From there, you can Recall Data, Erase Data, enter the Setup Menu or view the About screen for firmware version number.



Move/Adjust
Use the up and down buttons to navigate within a menu OR to adjust a selected value.



Select
On any menu, select the highlighted option to enter the submenu or adjust the value.



Go Back/Exit
Press to exit from any screen or menu to the previous screen.

ADDITIONAL FUNCTIONS AND OPTIONS (CON'T)

USING THE MEMORY

The SpeedCoach SUP memory stores 200 memory points at a fixed interval of 100 meters or 0.1 miles. It will also store a snapshot of your data each time you start and stop your timer. At each memory point, the SpeedCoach SUP stores the distance and elapsed time as well as the instantaneous stroke rate, speed/split and distance per stroke from the last complete stroke prior to the memory point. The cumulative average speed to that point is also stored.



Recall Data

Select Recall Data from the Main Menu. The display will return to the normal window arrangement with a RECALL bar displayed. The Interval count is displayed in the top right corner.



Step through Data

The screen will advance to the next point with each press.

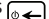


Change the Flex Fields


At any data point, you may change the flex fields to see the other stored values.

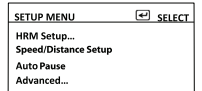


Erase Data

When your SpeedCoach's memory is full, it will cease storing data. To clear the memory, select Erase Data from the Main Menu. Note - data is erased immediately. Press  to cancel if you do not wish to erase.

SETUP MENU

From the Main Menu, use the  and select Setup. From there, use the menu navigation steps described above to navigate, select, adjust and exit setup options:



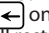
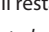
HRM Setup

Clicking this option will automatically attempt to pair the Heart Rate Monitor (HRM) belt with the SpeedCoach unit. The HRM will turn on automatically when attached to your body. If your HRM belt is not found, place two fingers on the metal strap buckles to activate.

Speed/Distance Setup

Options are Speed Mode (where you can select Speed, which is your distance for a time, or Split, which is predicted for your selected interval) and Units (change to select which units of measure you wish to be displayed).

Auto Pause

Your auto pause selection will govern whether the timer will stop running automatically after you stop paddling, or continue running, allowing you to time rest intervals even if you stop paddling. If Auto Pause is "ON," the timer and other windows will all stop six seconds after that last stroke is detected. If the Auto Pause is "OFF," the timer will keep running whether or not you are paddling. To stop the timer when Auto Pause is off, press  once. To resume paddling, press  to bring up the READY bar. The timer will restart as soon as a stroke is detected.

NOTE: Average Speed is always calculated as a function of the distance covered in the elapsed time shown. Because the timer will continue to run while you are not paddling, turning Auto Pause "OFF" will impact the calculation of your cumulative average speed.

Advanced

To access more advanced setup options, see below.

ADVANCED SETUP MENU

GPS Spd Smoothing, Strokes

The Speed Smoothing feature will average the last number of strokes selected. If "2" is selected, for example, the Speed/Split displayed will be an average of the last two strokes, updated every stroke.

Stroke Rate Setup

Options are Timer Start Acceleration, Noise Filtering and Axis. Timer Start Acceleration governs the degree of acceleration that must be detected by the accelerometer to start the stroke meter. Noise Filtering governs the degree to which the accelerometer will register changes in acceleration as a stroke. The default value of 3 is generally the best for all types paddling. A lower value will increase the variability of the stroke rate. The Axis option allows you to select Front-Back (2) or Any (3). Front-Back (2) is the recommended setting for paddling.

Time and Date

Used to change the format of the date and time displayed. Please note: only time shows currently, date will be shown on recall screen.

Diagnostics

The Diagnostics screen provides information about the performance of your unit's GPS receiver, accelerometer, HRM, clock and charging system. This information assists NK tech support in case your unit is not functioning correctly.

GPS FUNCTION AND ACCURACY

Your SpeedCoach SUP employs a high-precision 5-Hz GPS receiver. This means it receives GPS position and speed data from the GPS satellites 5 times a second. This update rate, which is five times that of any running watch on the market, is necessary to provide the data density for accurate stroke-by-stroke paddling speed. Your GPS receiver's performance is dependent upon having an unobstructed view of the sky. After passing under a low or wide bridge, you are likely to notice erratic speed data for a stroke or two. Your unit will return to accurate values as soon as it has re-established good satellite signal. A higher setting for speed-smoothing strokes will dampen both the initial error and the return to valid readings. Note that your total distance, elapsed time and average speed will not be affected by these few strokes of erratic speed readings. You may also notice slightly degraded speed performance (less stable readings) on extremely overcast days.

The GPS receiver provides speed accuracy of +/- 0.1 m/s, which translates to +/- 3 seconds at a 2:00 /500M split pace. Distance accuracy is +/- 2.5M over any distance.

BATTERY USE AND CHARGING

A fully charged battery will provide approximately 6-8 hours of operation, depending on backlight use. Each bar on the battery indicator represents 20% of battery life, or approximately 1.2 to 1.6 hours.

To charge your unit, press it firmly into the charging dock of your SpeedCoach SUP charger until it clicks and you see "Charging ..." on the screen. The battery indicator will flash and the bars will indicate the charge status achieved. The battery indicator will show full and stop flashing after 90% charge is achieved, and the display will turn off when the unit is fully charged.

The SpeedCoach SUP can only be charged with the supplied charging dock. The SpeedCoach SUP is compatible with any USB charging source, including your computer or a cell-phone standby power source.



WARNING! LITHIUM-ION POLY BATTERY HAZARDS

Your SpeedCoach SUP contains a lithium-ion poly battery pack. Lithium-ion batteries contain flammable liquid electrolyte that may vent, ignite and produce sparks when subjected to high temperatures or when damaged or overcharged. If ignited, batteries may burn rapidly with a flare effect and may produce irritating, corrosive and/or toxic gases, including toxic hydrogen fluoride gas, which may cause dizziness or suffocation. Contact with battery electrolyte may be irritating to skin, eyes and mucous membranes.

- Do not ever subject to fire or temperatures above 140°F | 60°C. NOTE: A car in hot sunlight may exceed these temperatures!
- Do not charge, use, transport or store above 115°F | 45°C.
- Do not charge below 32°F | 0°C.
- Do not puncture or open the unit.
- If the unit's internal battery pack is damaged, avoid contact with battery electrolyte, which may be irritating to skin, eyes and mucous membranes.
- In case of battery fire, evacuate the area to avoid inhalation of fumes. If possible, cover the battery with sand to extinguish the fire or use a dry ABC- type extinguisher.

SPECIFICATIONS

WEIGHT	Control unit and bumper: 5.2oz.(150 gm)
SIZE	Display unit measure 3.6X2.6X1.2 in (92x67x31mm) with bumper
BOUYANCY	Does not float
WATER RESISTANT	Waterproof (IP-67)
MEMORY	200 data point memory-store and review multiple pieces. Fixed 100-meter interval.
BATTERY CAPACITY	One rechargeable lithium-poly battery provides up to 8 hours of battery life.
BATTERY LIFE EXPECTANCY	Battery can be expected to last 300 full charge/discharge cycles. The expected cycles increase greatly for partial charge/discharge. After 300 cycles, expected capacity is 80% of original.
COMPLIANCE	The SpeedCoach SUP conforms with Council Directive 2004/108/EC (december 15, 2004) on electromagnetic compatibility and is CE-marked accordingly.
ENVIRONMENTAL	The SpeedCoach SUP is RoHS (reduction of hazardous substances) compliant and marked in accordance with the WEEE (Waste Electrical And Electronic Equipment) directive. Please do not dispose of the unit or battery in your household trash. Return to NK, an NK dealer or a designated recycling center for proper recycling and disposal.

LIMITED TWO-YEAR WARRANTY

NK warrants your SpeedCoach SUP and accessories to be free of defects in materials and workmanship for two years. NK will repair or replace your SpeedCoach SUP when notified within the warranty period, and will return the product via domestic ground shipping or NK's choice of method of international shipping at no charge. The following issues do not result from a manufacturing defect and are not covered under this warranty:

- Damage due to improper use or neglect (including corrosion).
- Damage resulting from severe impact, crushing or mechanical harm.
- Modifications, alterations or attempted repairs by someone other than an authorized NK repair agent.
- Water damage resulting from exposure to water after product enclosure has been visibly damaged and/or failure to return product for service promptly after product enclosure has been compromised.
- Normal wear and tear.
- Reduction in capacity of rechargeable battery normal for its age and/or number of charge/discharge cycles.
- Damage resulting from corrosion or leakage of batteries due to improper storage or charging.

Except for the warranties set forth herein, NK disclaims all other warranties, expressed, implied or statutory, including, but not limited to, the implied warranties of merchantability or fitness for a particular purpose. Any implied warranties that may be imposed by applicable law are limited to the term of this warranty. In no event shall NK be liable for any incidental, special or consequential damages, including, but not limited to, loss of business, loss of profits, loss of data or use, whether in an action in contract or tort or based on a warranty, arising out of or in connection with the use or performance of an NK product, even if NK has been advised of the possibility of such damages.

You agree that repair, and (upon availability) replacement, as applicable, is your sole and exclusive remedy with respect to any breach of the NK Limited Warranty set forth herein. All product liability and warranty options are governed exclusively by the laws of the Commonwealth of Pennsylvania.

IMPORTANT: If you become aware that your product is no longer waterproof – either due to a severe impact or a visible product defect that has developed – stop using it IMMEDIATELY and return it to NK for repair. In many instances, we can repair the product if returned promptly. However, exposure to moisture for any length of time will cause permanent and irreparable damage to electronic components and void your warranty.

Register your SpeedCoach SUP!

Your warranty period will be measured from the date of your purchase if it can be proven, or from the date of manufacture if it cannot be. The best way for you to ensure full warranty coverage is to REGISTER your product promptly under the support section of NK's website. We keep your registration information in strict confidence and do not sell it, share it or use it for anything but product-related information bulletins (which you may decline receiving).

NK Nielsen-Kellerman

US Toll-Free 800-784-4221 | Int'l Phone +1 610-447-1555 | Email support@nkhome.com

NKhome.com

© Copyright 2013. All rights reserved.

The following are registered trademarks of Nielsen-Kellerman Co.:
NK, the NK logo, SpeedCoach.