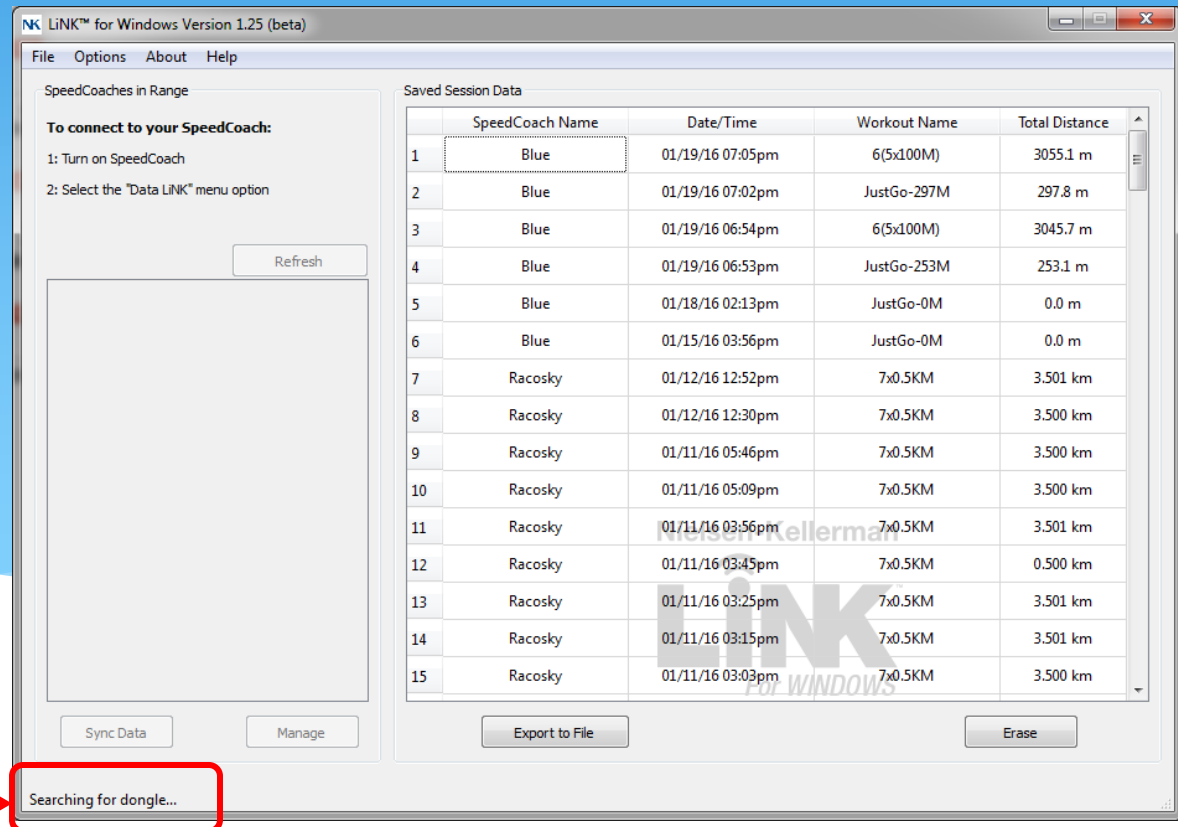


# Troubleshooting Bluetooth Dongle Issues with the SpeedCoach Model 2 and LiNK for Windows

If **LiNK for Windows** is not recognizing that a dongle is inserted after you plugged the dongle into your computer, this document will help troubleshoot the issue.



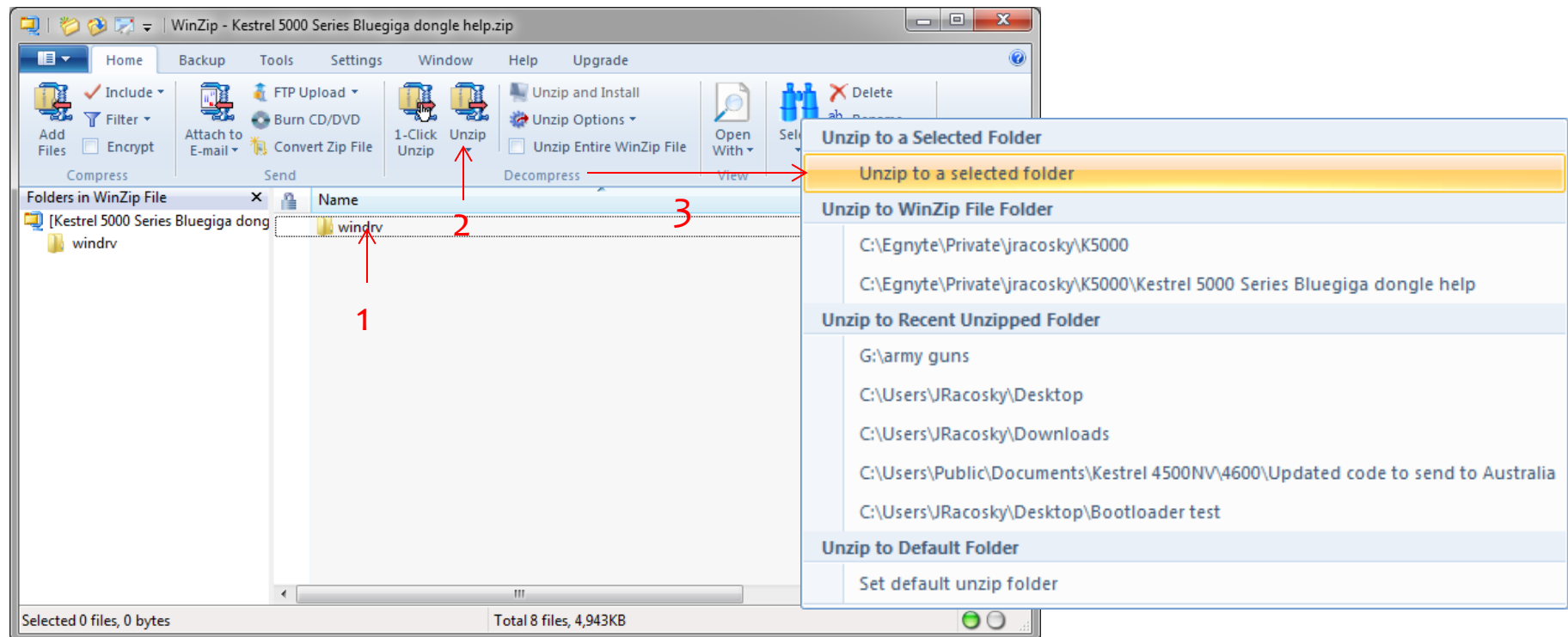
Example: Shows Searching for Dongle

# Troubleshooting Bluetooth Dongle Issues with the SpeedCoach Model 2 and LiNK for Windows

- 1) Make sure you are using a Bluegiga Bluetooth [dongle](#) that was provided from NK or NK authorized dealer. Native Bluetooth computer devices or various off-the-shelf plug-in dongles will not work with the LiNK program.
- 2) Please try removing the USB dongle and reinserting into the same USB port. If still not found, try a different USB port.
- 3) If the program is still not finding it, you will need to manually update the Bluegiga Bluetooth firmware. Please follow the instructions on the next few pages to show you how to do this.

# Manually updating the Bluegiga Driver Software

- 1) The driver is included in this zip file. It is contained in the folder structure call “windrv”. You will first need to unzip this to a folder location you can locate again, such as the Desktop.



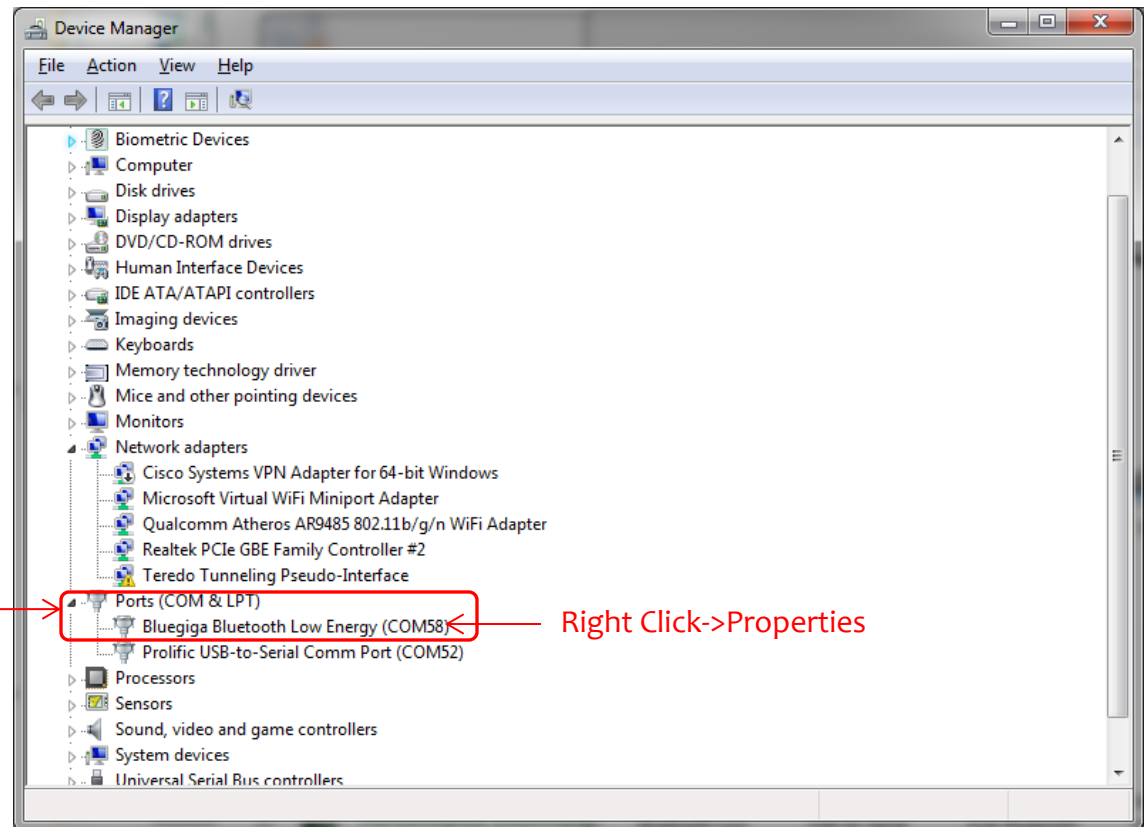
# Manually updating the Bluegiga Driver Software Continued

2) Once the folder “windrv” has been saved to your computer. Open up the Control Panel and go to Device Manager. If Device Manager isn’t shown, please click “View By: Small Icons” in the top right of Control Panel window.

3) Go to the Ports tab and open up the arrow.

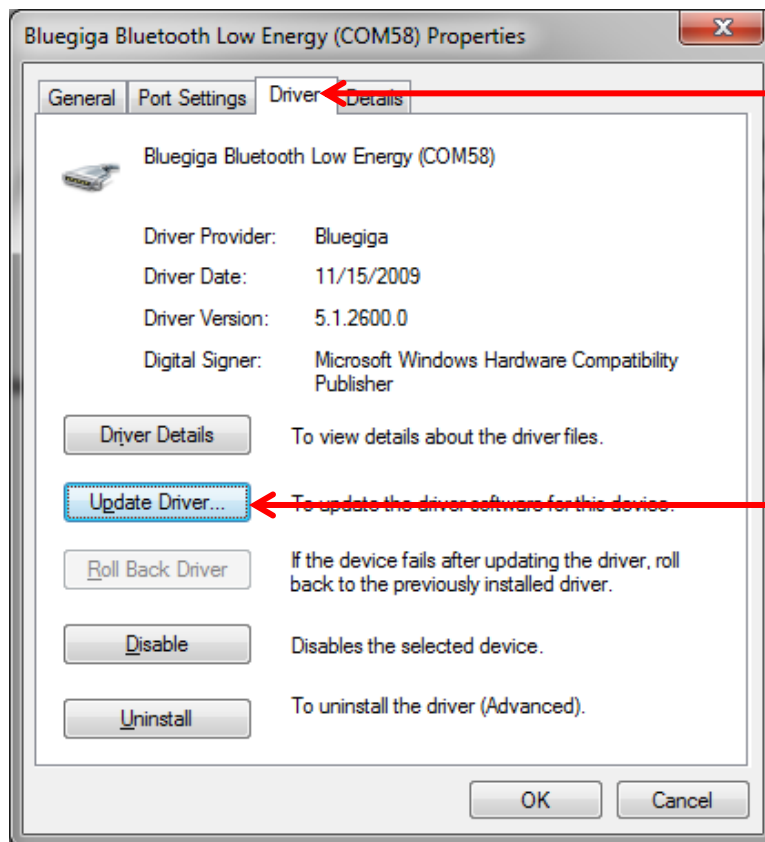
4) Locate the Bluegiga Bluetooth Low Energy dongle on the list.

5) Highlight this item and Right Click to select Properties.

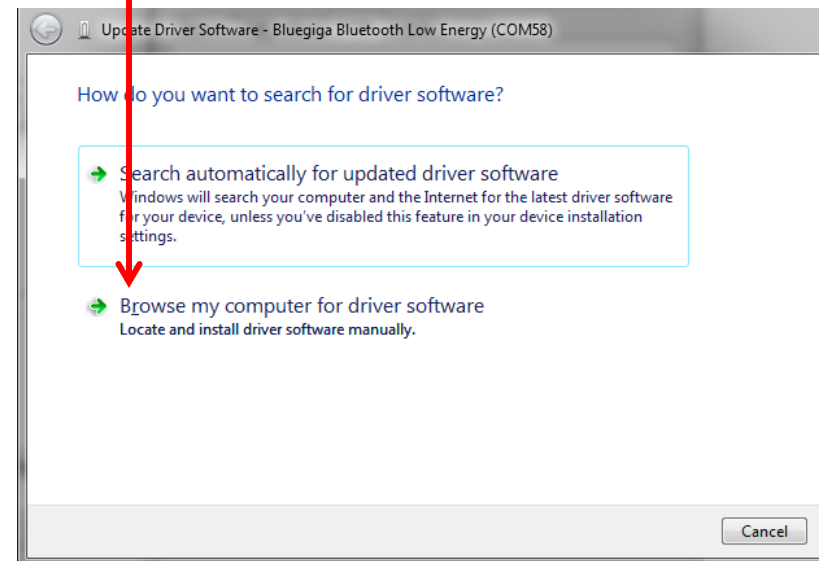


# Manually updating the Bluegiga Driver Software Continued

6) Next go to Driver Tab and select Update Driver.



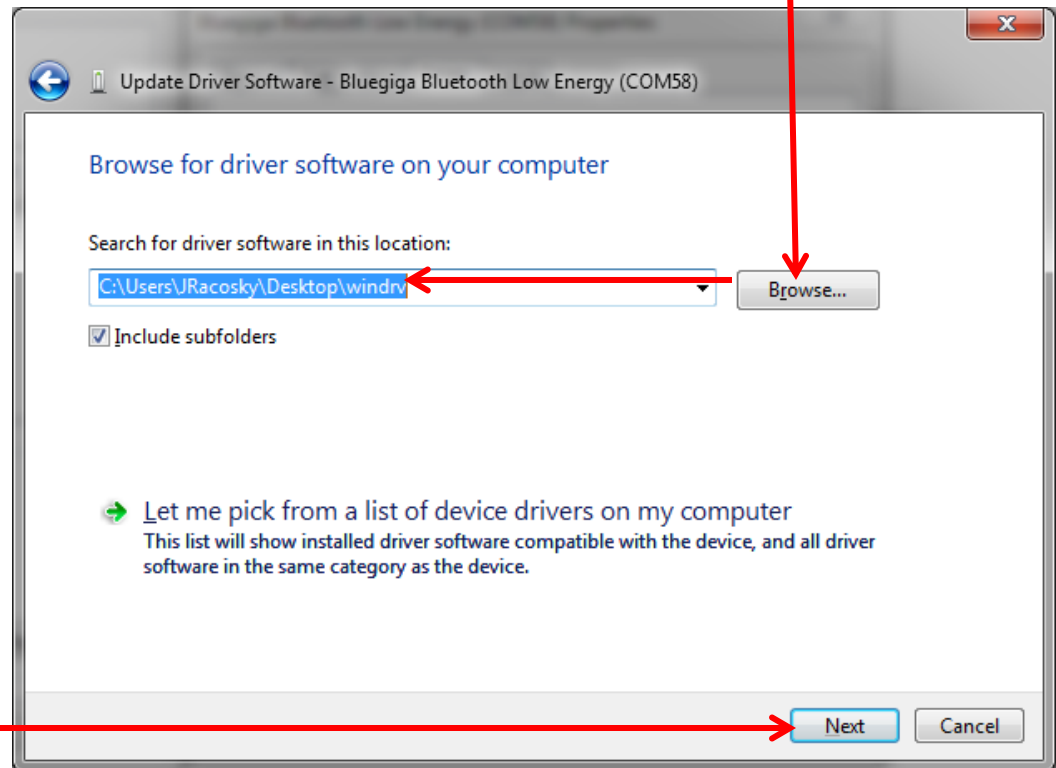
7) Then select "Browse my computer for driver software".



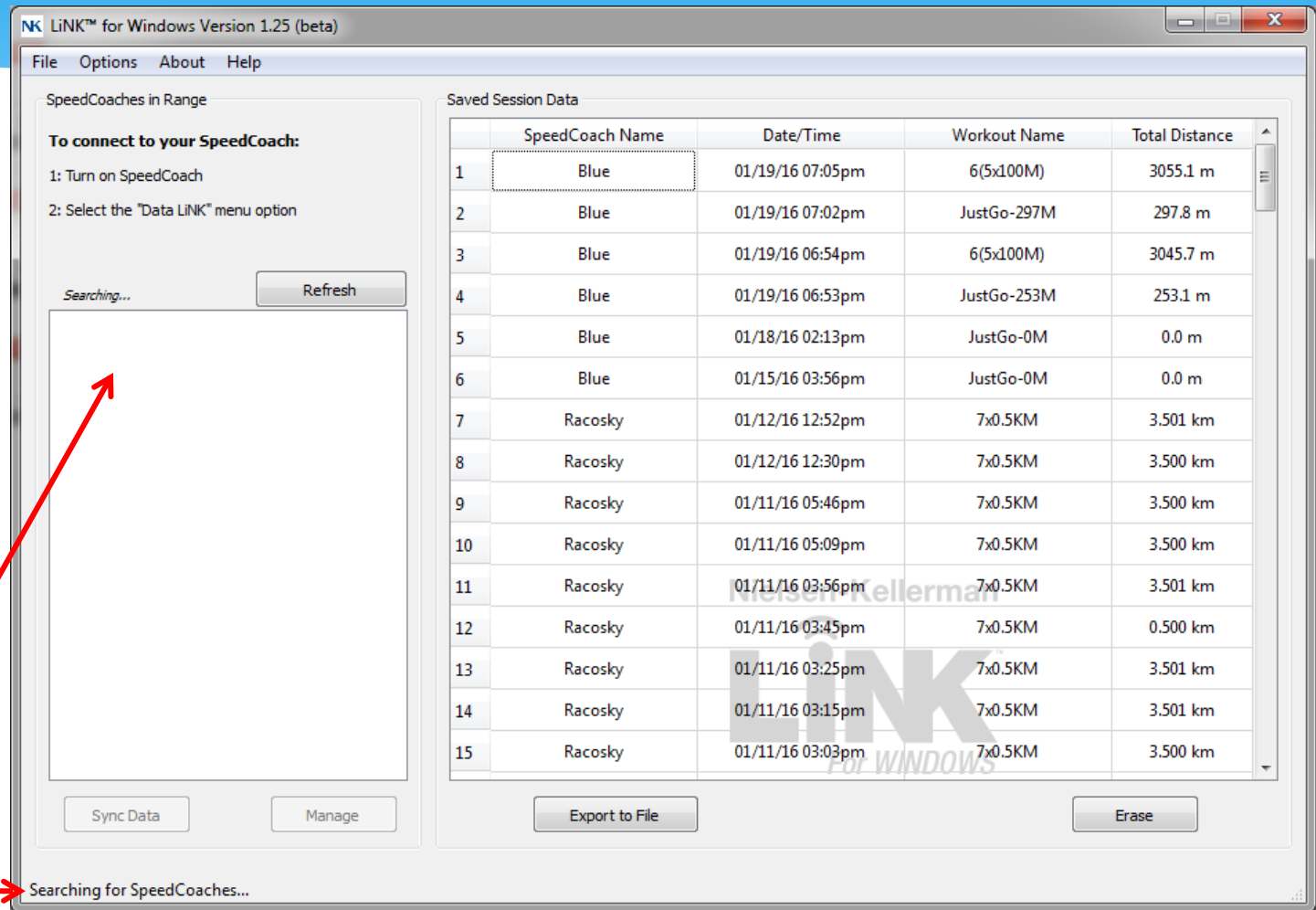
# Manually updating the Bluegiga Driver Software Continued

8) Select the Browse button and then navigate to the location where you saved the “windrv” folder and select Ok.

9) Select Next. It may take a little time for the driver to load but once it does, please open the LiNK for Windows application again and you should see “Searching for SpeedCoaches”.



# Manually updating the Bluegiga Driver Software Continued



If you still have issues, please contact [techsupport@nkhhome.com](mailto:techsupport@nkhhome.com)